



Websense Enterprise®, the world's leading Employee Internet Management solution, defends organizations and employees using the Internet against new and emerging threats such as spyware and malicious mobile code. Websense Enterprise enhances security, improves employee productivity, reduces legal liability, and optimizes the use of IT resources. Websense Enterprise integrates seamlessly with leading network infrastructure products and offers unequaled flexibility and control.

### GROWING RISKS AND PRODUCTIVITY CHALLENGES

Every organization with a connection to the Internet has faced the problem of users accessing inappropriate material on the web. To that problem have been added those of harmful applications downloaded from websites, spyware, the use of instant messaging (IM) and peer-to-peer (P2P) applications, and more. The result has been a dramatic increase in the costs and risks of maintaining an unmonitored network.

### Websense Enterprise, The Solution

Websense Enterprise is a comprehensive Employee Internet Management solution that meets the threats that arise from employee use of the Internet, the network, and desktop applications. It is the only solution that offers control at multiple points throughout the enterprise - at the gateway, on the network, and at the desktop - to provide comprehensive and reliable protection against emerging threats.

Websense Enterprise provides a powerful set of unique management capabilities. It allows organizations to assess the risks in their computing environment in real-time, to manage group and individual user privileges, to identify problem users, and to set and enforce corporate policies for appropriate use of the Internet and other IT resources.

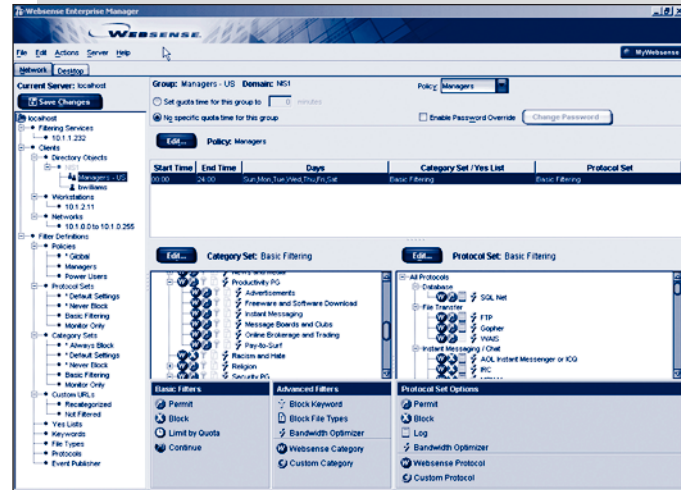
Together, Websense and its integration partners significantly reduce security risk and legal liability while enhancing employee productivity and conserving network bandwidth.

### WEBSENSE ENTERPRISE CAPABILITIES

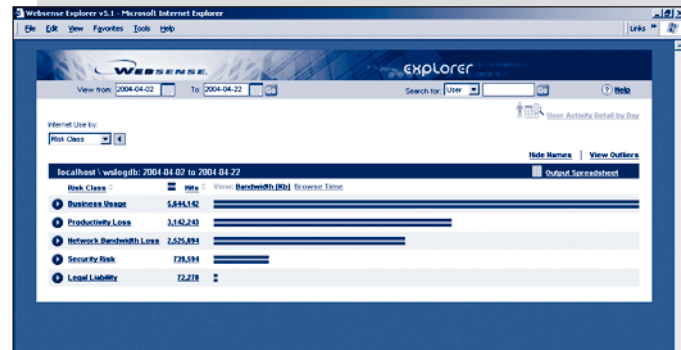
Websense Enterprise is the leading Employee Internet Management solution, combining great flexibility with rich functionality:

- Provides comprehensive and accurate Internet filtering supported by a database of URLs, built using a combination of automated and human classification and dynamically tuned to real-life surfing patterns with Websense WebCatcher™.
- Improves security and employee productivity by managing employee access to network applications and protocols such as IM, streaming media, and P2P networks.

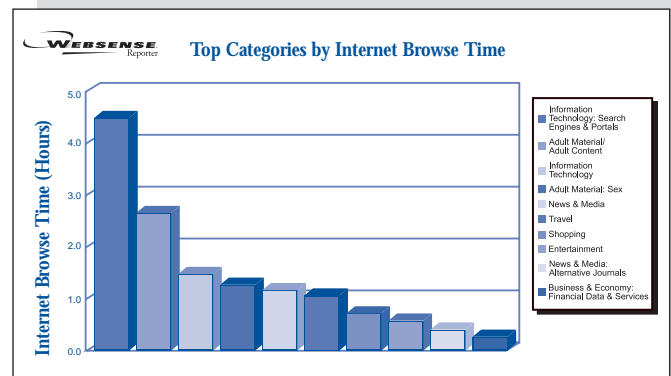
## Websense Enterprise® Integration Overview



Customize policies for different users and groups with Websense Manager.



Monitor employee computing risks with Websense Enterprise Explorer.



Choose from more than 80 report formats with Websense Enterprise Reporter.



## Optimized filtering using the most comprehensive and accurate database

The Websense Master Database is the largest, most accurate filtering database which contains more than 6 million sites, classified into over 80 categories, including adult content, gambling, hacking, gaming sites and more.

### Websense Enterprise URL categories:

#### Abortion

- Pro-Choice
- Pro-Life

#### Advocacy Groups

#### Adult Material

- Adult Content
- Lingerie and Swimsuit
- Nudity
- Sex
- Sex Education

#### Business and Economy

- Financial Data and Services

#### Drugs

- Abused Drugs
- Marijuana
- Prescribed Medications
- Supplements and Unregulated Compounds

#### Education

- Cultural Institutions
- Educational Institutions
- Educational Materials
- Reference Materials

#### Entertainment

- MP3

#### Gambling

#### Games

#### Government

- Military
- Political Organizations

#### Health

#### Illegal or Questionable

#### Information Technology

- Computer Security
- Hacking
- Proxy Avoidance
- Search Engines and Portals
- URL Translation Sites
- Web Hosting

#### Internet Communication

- Web Chat
- Web-based Email

#### Job Search

#### Militancy and Extremist

#### News and Media

- Alternative Journals

#### Racism and Hate

#### Religion

- Non-Traditional Religions and Occult and Folklore
- Traditional Religions

#### Shopping

- Internet Auctions
- Real Estate

#### Social Organizations

- Professional and Worker Organizations
- Service and Philanthropic Organizations
- Social and Affiliation Organizations

#### Society and Lifestyle

- Alcohol and Tobacco
- Gay or Lesbian or Bisexual Interest
- Hobbies
- Personal Web Sites
- Personals and Dating
- Restaurants and Dining

#### Special Events

#### Sports

- Sport Hunting and Gun Clubs

#### Tasteless

#### Travel

#### Vehicles

#### Violence

#### Weapons

- Balances work-related and personal surfing by enabling IT administrators to set custom policies to manage employee use of the Internet and network applications use.
- Minimizes administrative overhead with easy-to-use centralized management of employee computing policies using Websense Enterprise Manager.
- Detects productivity issues and security risks arising from employee Internet and application use.

### Industry-leading analysis and reporting tools

**Websense Enterprise Real-Time Analyzer™** – Analyze current and recent network traffic with this real-time analysis tool, which captures a snapshot of network activity and answers important network-related questions quickly.

**Websense Enterprise Explorer** – Get quick and easy access to employee activity statistics with this forensic and reporting tool for IT, HR, legal, and business managers.

**Websense Enterprise Reporter** – Choose from over 80 predefined report templates with this robust engine, built on Crystal Reports® and offering the ability to customize and schedule reports for distribution via email.

Provides report templates, block pages, and web page category names in ten languages: Chinese (simplified and traditional), English, French, German, Italian, Japanese, Korean, Portuguese and Spanish.

### Enhanced Internet filtering with Websense Enterprise Premium Groups™ (PG):

**Websense Enterprise Security PG™** – Minimizes the risk of security breaches by blocking access to phishing and other frauds, spyware sites, and websites infected with malicious mobile code.

**Websense Enterprise Productivity PG™** – Increases employee productivity by managing access to many cyberslacking categories such as online advertisements, IM, freeware, and pay-to-surf.

**Websense Enterprise Bandwidth PG™** – Improves network performance by controlling access to bandwidth-intensive downloads such as streaming media, Internet radio and TV, and P2P file sharing.

### Network management and bandwidth optimization with add-on modules

**Websense Enterprise Bandwidth Optimizer™** – Improves bandwidth utilization and network performance to ensure that critical business applications always have sufficient bandwidth.

**Websense Enterprise IM Attachment Manager™** – Minimizes security threats due to viruses and worms by blocking IM file attachments.

## SEAMLESS INTEGRATION AND RAPID DEPLOYMENT

Websense Enterprise integrates with a wide range of security and network products including firewalls, proxy servers, caches, switches, routers, and appliances. Websense Enterprise has been thoroughly tested and certified to work seamlessly with all major security and network products. Consequently, deployment is quick and easy.

Websense Enterprise can be deployed in any of three ways, depending on your network requirements: in an integrated, an embedded, or a stand-alone

configuration. The wealth of Websense Enterprise deployment options ensures ease-of-installation and maintenance while maximizing scalability, performance, and feature support.

## Integrated deployment

Websense Enterprise integrated solutions enable seamless deployment of filtering functionality with your existing network infrastructure. The Websense integrated approach with firewalls, caches, proxies, routers, and switches delivers “pass-through” filtering by utilizing the packet-capturing capabilities of the network gateway.

Integrated deployment is ideal for the large data center, offering the following key benefits to customers:

**Maximum Scalability** – Integrated solutions utilize the packet-capturing capabilities of network gateways, providing the most comprehensive filtering available. Integrated deployment allows your organization to scale reliably as network loads and transaction volumes increase.

**Superior Stability** – Integrated deployment eliminates the possibility of a single point-of-failure, as network and gateway resources can function independently.

## Embedded deployment

Websense Enterprise embedded solutions enable an on-box integration with an appliance or gateway product. This deployment option decreases the number of separate hardware components necessary for Internet filtering.

Although feature support may vary among embedded solutions, IT administrators can realize key benefits that are important for remote or branch offices:

**Lower Hardware Expense** – The reduced number of separate hardware components decreases the total cost of ownership of your Internet filtering solution by making installation easier and lowering maintenance and management expenses.

**Decreased Network Latency** – Websense Enterprise embedded solutions minimize network latency and provide improved filtering performance by combining multiple functions onto one platform.

## Stand-alone deployment

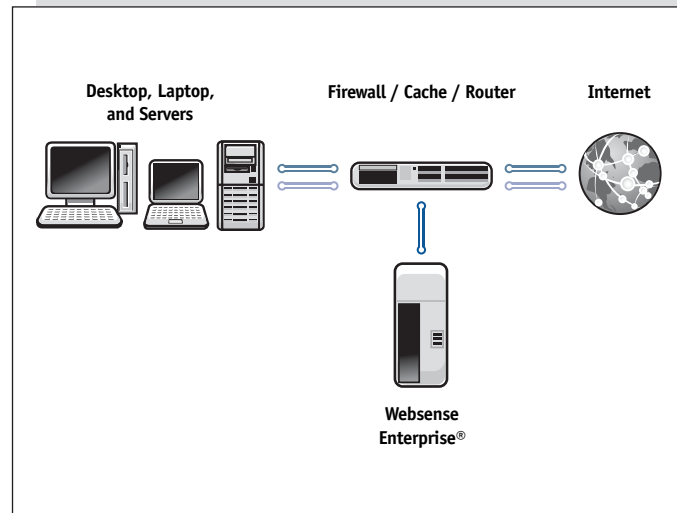
Websense Enterprise offers stand-alone deployment for any size environment. Websense Network Agent enables “pass-by” filtering technology and is compatible and interoperates with any network gateway while providing full-featured filtering capabilities.

Suitable for organizations of all sizes, stand-alone deployment offers the following key benefits to customers:

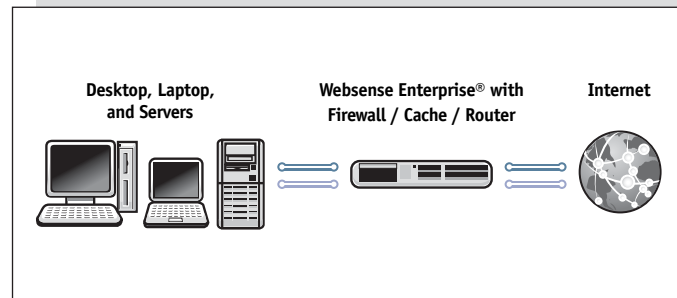
**Ease of Use and Installation** – The Websense Enterprise stand-alone solution allows organizations to install and deploy full-featured filtering without the involvement of third-party gateway solutions.

**Maximum Network Performance** – Websense stand-alone deployment, based on the Network Agent technology, ensures maximum network performance. The Network Agent acts as a direct interface to network traffic – not a proxy – and simply filters packets as they cross the wire without adversely affecting network performance.

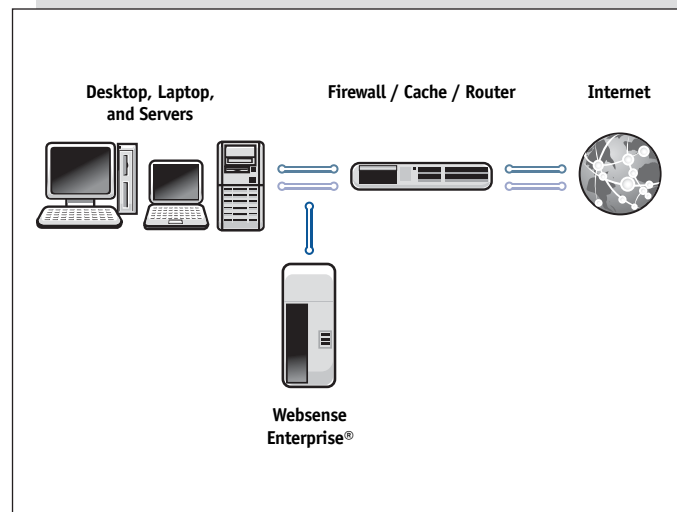
## Websense Enterprise deployment options



Websense Enterprise integrated solution



Websense Enterprise embedded solution



Websense Enterprise stand-alone solution

## WebSense Certified Integration Partners

Partner	System Requirements	Stand Alone	Integrated	Embedded
<b>Firewall Solutions</b>				
3Com	Super Stack Firewall / Super stack 3 or greater	X	X	
Check Point	Check Point FW-1 4.1 SP3 or greater, Check Point FW-1 FP 1 or greater, Check Point FW-1 NG AI	X	X	
Cisco	Cisco PIX Firewall 500 series PIX firmware 4.4 or greater	X	X	
CyberGuard	CyberGuard FireSTAR, knightSTAR, or STARlord running CyberGuard Firewall for UnixWare release 4.3PSU2 or greater	X	X	
LightSpeed	Lightspeed 1100 or 2100 appliance running Total Traffic Control 02.75.00 or greater	X	X	
Juniper Networks/ NetScreen	Any Netscreen firewall (except Netscreen-1000) with ScreenOS 2.6 or greater	X	X	
ServGate	ServGate SGOS 2.4 or greater	X	X	
SLMsoft	SLMsoft SecurIT Firewall 4.04 or greater (for Sun Solaris)	X	X	
SonicWALL	Any SonicWALL firewall with firmware 6.3 or greater	X	X	
<b>Cache/Proxy Solutions</b>				
Blue Coat Systems	Embedded: Blue Coat Systems Proxy SG Appliance running SGOS 3.0 or greater Integrated: Blue Coat Systems Appliance running SGOS 2.103 or greater or CacheOS 3.5 or greater	X	X	X
Cisco	Embedded: Cisco Content Engine ACNS 5.0.3 or greater Integrated: Cisco Cache Software 2.1 or greater or Cisco ACNS 4.1 or greater	X	X	X
Dell	Dell PowerApp Cache running Inktomi Traffic Server Engine 4.0.15 or greater	X	X	
F5	F5 EDGE-FX running Inktomi Traffic Server Engine 4.0.15 or greater	X	X	
Hewlett-Packard	HP Web Cache running Inktomi Traffic Server Engine 4.0.15 or greater	X	X	
Hewlett-Packard	HP ProLiant running Inktomi Traffic Server Engine 4.0.15 or greater	X	X	
iMimic	iMimic DataReactor software-only version or any appliance running DataReactor v2.2 or greater	X	X	
InfoLibria	InfoLibria DynaCache with COS 3.5 or greater	X	X	
Inktomi (Yahoo)	Inktomi Traffic Server 4.0.18 or greater	X	X	
Microsoft	Microsoft ISA Server 2000 (SP 1), Microsoft ISA Server 2004	X	X	X
Microsoft	Microsoft Proxy Server 2.0	X	X	
Network Appliance	Network Appliance NetCache 5.2.1 R1D4 or greater	X	X	
Novell	Embedded: Volera Excelerator XL 1.0 or greater Integrated: Volera Excelerator 2.1 or greater	X	X	X
Squid	Squid STABLE 2.5	X	X	X
Stratacache	Stratacache StrataCORE 2.3 or greater	X	X	
Sun Microsystems	Sun Java System Web Proxy Server 3.5 or greater	X	X	
3Com	3Com Webcache 2.59 or greater	X	X	
<b>Switch/Router Solutions</b>				
Cisco	Cisco Router Series 800 through 7400 running IOS v12.2 (15)T or greater with firewall feature set	X	X	
Cisco	Cisco Catalyst 6500 family with Firewall Services Module	X	X	
<b>Appliance Solutions</b>				
Crossbeam	Crossbeam X40S Blade Server 2.7 or greater	X		X
Immunix	Immunix Secure Linux 7.3 or greater	X		X
Nokia	Nokia IPSO 3.7 or greater	X		X

## WebSense Enterprise system requirements

### Hardware:

- Pentium III or Sun Ultra 10 processor or greater with at least 512 MB RAM. Hardware requirements will vary by configuration. Please see deployment guide for additional information.

### Supported Operating Systems:

- Microsoft® Windows® 2003 Server, Windows® 2000 Server (SP3 or greater)
- Red Hat Linux™ 9 or Red Hat Enterprise Linux™ 3
- Sun Solaris™ 8-9

Download a free, fully-functional 30-day evaluation at [www.websense.com/downloads](http://www.websense.com/downloads) today!

**WebSense Inc.**  
San Diego, CA USA  
tel 800.723.1166  
tel 858.320.8000  
[www.websense.com](http://www.websense.com)

**WebSense UK**  
Chertsey, England  
tel +44 (0)1932. 796001  
[www.websense.co.uk](http://www.websense.co.uk)

**WebSense France**  
Paris, France  
tel +33 (0)15660. 5814  
[www.websense.fr](http://www.websense.fr)

**WebSense Germany**  
Munich, Germany  
tel +49 (0)89 24445. 4005  
[www.websense.de](http://www.websense.de)

**WebSense Japan**  
Tokyo, Japan  
tel +813.5322.1335  
[www.websense.co.jp](http://www.websense.co.jp)

**WebSense Australia**  
Sydney, Australia  
tel +61 2 9006. 1621  
[www.websense.com.au](http://www.websense.com.au)

**WebSense Greater China**  
Hong Kong  
tel +852.2855.8811  
[www.chinese.websense.com](http://www.chinese.websense.com)  
[www.prc.websense.com](http://www.prc.websense.com)

**WebSense Latin America**  
Sao Paulo, Brazil  
tel +55.11.4612.0798  
[www.espanol.websense.com](http://www.espanol.websense.com)  
[www.portugues.websense.com](http://www.portugues.websense.com)